



MONTHLY NEWSLETTER

JULY 2008

In this newsletter.....

1. ANAPHI Secretariat Contact Details
2. ANAPHI moves to QUT
3. ANAPHI News! Date reminder for 2008 Teaching and Learning Forum
4. Teaching and Learning Forum
5. Public Health Report
6. On behalf of Brian and Todd
7. Short Course on Public Health at La Trobe
8. New course added! School of Public Health and Preventative Medicine
9. Position Available at the University of Western Sydney
10. Positions Available at Queensland University of Technology



ANAPHI SECRETARIAT CONTACT DETAILS

Host organisation:
School of Public Health
Queensland University of Technology
Kelvin Grove, Queensland

Chair: Associate Professor Marylou Fleming
Phone: (07) 313 83370
E-mail: ml.fleming@qut.edu.au

Secretariat: Ms. Marguerite Sendall
Phone: (07) 313 85894
E-mail: m.sendall@qut.edu.au

Fax: (07) 3138 3369
Website: www.anaphi.org.au

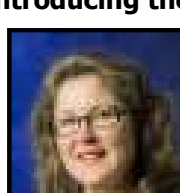
ANAPHI MOVES TO QUT

Introducing the new ANAPHI Chair, Associate Professor Marylou Fleming:



These are exciting times for public health and Universities that education public health professionals. I am very pleased to be able to assist ANAPHI and its networks to sustain the good work that Vivian Lin and Penelope Smith have done over the last 2 years. There are real opportunities for ANAPHI to engage with the Prevention Agenda nationally and to be funded to undertake some of the underpinning work. We are looking forward to working with all of you at various times and places over the next two years.

Introducing the new ANAPHI Secretariat, Marguerite Sendall:



Hello! Firstly, many thanks to Penny Smith, the outgoing ANAPHI Secretariat, for all her hard work and dedication to this position. I hope I can fill Penny's 'big shoes'! Secondly, and very briefly, I teach health promotion part-time here at the School of Public Health and am in the 'home straight' of my doctoral thesis!

ANAPHI NEWS!

TEACHING AND LEARNING FORUM DATE REMINDER!

Preceding the AHHA National Congress (25th & 26th September).

Date: Tuesday 23rd and Wednesday 24th September
*There will be a dinner on Tuesday evening.
Where: Canberra, ACT (venue to be confirmed)
Sessions: As with previous years format, an Indigenous session will be run alongside the general session.
* Contact Bill Genat (bgenat@unimelb.edu.au)

More details will be circulated in the very shortly!

TEACHING AND LEARNING FORUM

ABSTRACT SUBMISSIONS

The ANAPHI Teaching and Learning Forum provides an opportunity to showcase diverse and innovative teaching and learning activities in the area of public health education at a tertiary level. The primary aim of the conference is to share knowledge, experience and ideas around teaching and learning in public health education in the tertiary sector in Australia. Drawing on state, national and international learning's, it is hoped that the forum will bring academic, industry and government together to discuss, share and ultimately work together to improve and enhance public health education, and in turn the public health workforce.



The call for abstracts will be in **early August**.

PUBLIC HEALTH REPORTS

CURRICULAR INNOVATION AND THE SCIENCE OF PUBLIC HEALTH EDUCATION

*Special Public Health Reports Supplement 2
Volume 123, Issue 7, 2008*



This supplement is titled "Curricular Innovation and the Science of Public Health Education." **Public Health Reports** (PHR) is an informative and accessible resource for practitioners, teachers and students of public health. The Journal provides important research and key discussions on the major issues confronting the public health community.

In Volume 123, Supplement 2:

- Curricular Innovation and the Science of Public Health Education: A Call to Action
- Professional Development for Prospective Epidemiology Teachers in Grades 6-12
- Articulation of Undergraduate and Graduate Education in Public Health
- Education for the Public Health Profession: A New Look at the Roemer Proposal
- Professionalism and Ethics in Public Health Curriculum
- Partnering to Meet Training Needs: A Communicable-Disease Continuing Education Course for Public Health Nurses in North Carolina
- Service Learning Within the University of Connecticut Master of Public Health Program
- Lifelong Learning for Public Health Practice Education: A Model Curriculum for Bioterrorism and Emergency Readiness
- Practice-Based Teaching for Health Policy Action and Advocacy
- Public Health and Social Work: Training Dual Professionals for the Contemporary Workplace
- Using a Web-Based Simulation as a Problem-Based Learning Experience: Perceived and Actual Performance of Undergraduate Public Health Students

* The supplement can be found online at www.publichealthreports.org.

**On behalf of
Brian Oldenburg, Research Director, AIHPS
and
Todd Harper, CEO, VicHealth**



Following the National Prevention Summit held early in April, and other inputs we've received since then, we've identified a number of pieces of work that we believe could usefully inform future National deliberations in relation to prevention. We would value any comments or feedback you have in relation to this list and whether you would have an interest in contributing to the progress of any of these in particular. If so, please reply to Rebecca Watson by email to info@aihps.org, so that we can keep these moving ahead.

We also have posted the updated version of the *Platform for Prevention*, which has been revised according to some more valuable input from Summit participants www.aihps.org. Likewise, the *Prevention Summit Discussion Paper* has also been updated and is available on the same website.

You might also be interested to see the latest VicHealth E-bulletin about the outcomes of the National Prevention Summit which has been sent to all Victorian members of Parliament, ministerial advisors and local government CEOs:

<http://stateofhealth.optin.com.au/stateofhealth/issue3/email.html>



SHORT COURSE ON PUBLIC HEALTH PREPAREDNESS

PLAN, TRAIN PRACTICE: GETTING YOUR ORGANIZATION READY FOR EMERGENCIES.

A two-day course for leaders and managers of large and small organisations, clinics, office practices organised by the School of Public Health, La Trobe University.

Dates: Monday 18th & Tuesday 19th August 2008

Location: La Trobe University City Campus,
Franklin St, (Opposite Queen Victoria Market)
Melbourne, Vic 3000, Australia.
Tel: 03 9285 5100
Email: CityCourses@latrobe.edu.au

The World Health Organization acknowledges that disasters are increasing in number and intensity, and urges that individuals, organisations and health systems will need to include these evolving threats in comprehensive efforts to protect health. Crises in China, Banda Aceh, New Orleans, Bali, and Darfur have stunned the world, whilst Australia routinely endures floods, fires, and storms. Less commonly occur explosions and major chemical spills, and the risk of emerging diseases and pandemics are always on the horizon. The impacts can be varied and unexpected. Many lessons are to be learned from those who have experienced these events, but the best approach is to be prepared. At the completion of this two day course, the participant will have a complete outline for a local emergency plan, staff training schedule and exercise template.

Expression of Interest:

Dr Liz Hanna, School of Public Health, La Trobe University.
Email: L.Hanna@latrobe.edu.au Ph: 03 9479 5788 Mb: 0418 995 504

Course Costs:

Registration costs for the two day course:
Full registration \$450
La Trobe University Staff \$400 (with evidence)
Full time students \$200 (with evidence)

* Catering includes provision Lunch and Morning teas on both days.
* A cancellation fee of \$50 will apply after August 1st 2008.
* Payment may be made using the La Trobe University Secure On-line Cashier System
<http://131.172.206.152/onestop/transform.cgi?TRAN-NO=817>

Accommodation options:
http://www.check-in.com.au/Melbourne/Queen_Victoria_Market.htm

NEW COURSE ADDED!

SCIENTIFIC WRITING: GRANT APPLICATIONS AND RESEARCH PAPERS

The School of Public Health and Preventative Medicine, in addition to its Short Course Program in Public Health and Clinical Research, is offering an annual, wide-ranging Spring School of Public Health and Clinical Research, presented by experts in each field

Dates: 22 September - 3 October 2008.

Program: Full program can be found at www.monash.edu.au/news/monashmemo/notices/20080716/notices/clinical-research.html

Week 1: Public Health Updates

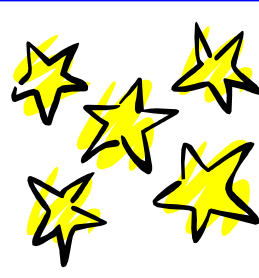
- Sep 22-24: Environmental Health Risk Assessment
- Sep 23: Introduction to Writing a Systematic Review
- Sep 24-25: Lifestyle Medicine and Clinical Prevention
- Sep 25: Chronic Disease Prevention Update
- Sep 26: Work Health Promotion

Week 2: Clinical Research

- Sep 29-30: Chronic Disease Modelling for Health Policy
- Sep 29: Ethics and Good Research Practice
- Sep 30: Common Problems in Clinical Research
- Oct 1: Scientific Writing: grant applications and Research Papers
- Oct 1-2: Biostatistics for Clinical and Public health Researchers
- Oct 3: Data management and Computing

* Spring School course fees are \$200 per day. Discounts apply.
* All courses earn CNE points as part of the RCNA Life Long Learning Program (Australia and New Zealand).

Enquiries: Suzy Giuliano
Telephone: +61 3 9903 0555
Fax: +61 3 9903 0181
Email: shortcourses.depm@med.monash.edu.au
Web: <http://www.med.monash.edu.au/epidemiology/shortcrs/index.html>



POSITION AVAILABLE

PROFESSOR / ASSOCIATE PROFESSOR OF PUBLIC HEALTH

The University of Western Sydney, Australia is currently recruiting a Professor/Associate Professor in Public Health for its School of Bio-medical and Health Sciences.

The successful applicant will have a PhD in a relevant area, a strong publication record, higher degree supervision experience, success in attracting external research funds, and academic leadership experience. A background in public health, health promotion, epidemiology, policy and health economics, or other related disciplines would be suitable for this role. A conjoint appointment with the School of Medicine will be considered for applicants with a relevant background

Further details:

http://pubapps.uws.edu.au/vacancies/?pro=position_details&pos_ID=5128

Closing Date: 15 August 2008

Enquiries: Professor Gregory Kolt
g.kolt@uws.edu.au



POSITIONS AVAILABLE

SENIOR LECTURER— BIOSTATISTICS SCHOOL OF PUBLIC HEALTH

We invite applications from biostatisticians who are creative and enthusiastic in teaching health science students and seek a strong base for their research. You will join a team of epidemiologists, research fellows and postgraduate students working on a wide range of health issues in national and international contexts.

SENIOR LECTURER— EPIDEMIOLOGY SCHOOL OF PUBLIC HEALTH

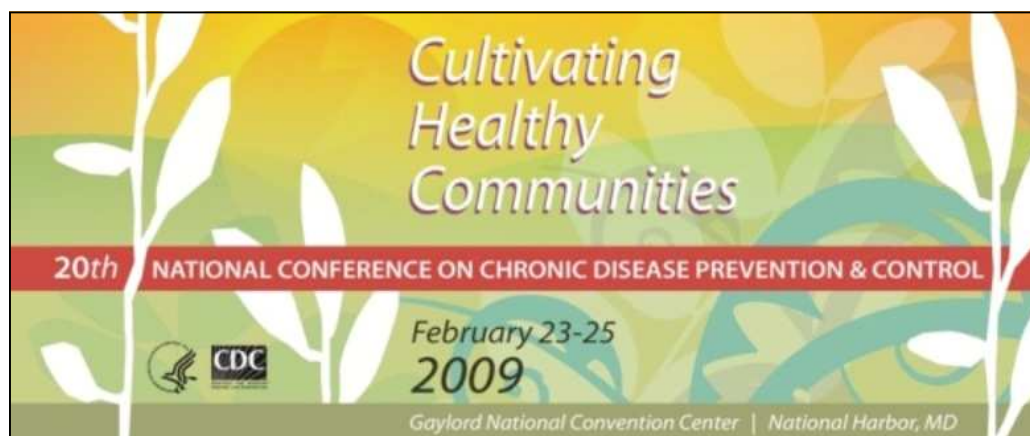
We invite applications from epidemiologists and public health research methodologists who are creative and enthusiastic in teaching and research. You will join a team of epidemiologists and biostatisticians, research fellows and postgraduate students working on a wide range of health issues in national and international contexts.

Closing date for both positions: 20 August 2008

Salary: AUD \$80,620 – \$92,980pa

Enquiries: Ass Prof MaryLou Fleming ml.fleming@qut.edu.au

Details: <http://www.hrd.qut.edu.au/jobs/index.jsp>



CONFERENCE REGISTRATION OPEN!

CONFERENCE FEES AND DEADLINES

Early Bird Regular Attendee (before 12/15/08)	\$450.00
Early Bird Student Attendee (before 12/15/08)	\$175.00
Regular Attendee	\$495.00
One Day Only Attendee	\$250.00
Regular Student Attendee	\$195.00

Note: The Early Bird Registration Deadline is **Monday, December 15, 2008**. If your registration information is received after this date, you will not be included in the participant directory. Regular advance registration closes on **Friday, January 23, 2009**. Please register before this date if you wish to have your registration packet ready when you check in.

Continuing education credit will be offered at this conference.

Payment Method: Online registration is preferred. Payment can be made by check, purchase order, VISA, MasterCard and American Express. If you register online and are paying by check, include the registration confirmation number on the check when mailing in payment.

Substitutions and Cancellations: Substitutions can be made at any time before January 23, 2009 by using the original password used to register for the conference. Please access the registration website and follow the prompts to substitute an attendee.

If you are cancelling your registration and require a refund - refunds will be given until January 23, 2009. A \$50.00 *per registration* cancellation fee will be assessed. After January 23, 2009 no refunds will be given.

For registration payment or cancellation questions, please contact the registration coordinator at 09natchronicdis@gmail.com.

For conference logistical information, please contact Bridgette Saunders at chronic2009@team-psa.com.

IMPORTANT DATES!

- ◆ The next ANAPHI Executive teleconference will be held on Tuesday, **6TH AUGUST 2008** (3pm EST).
- ◆ The next ANAPHI newsletter will be sent out bi-monthly (subject to Executive approval) on Wednesday, **17th SEPTEMBER 2008**. This is a week earlier than usual because of the Teaching and Learning Forum. All items for the newsletter must be submitted to the secretariat, Margo Sendall, by COB Wednesday, **12th SEPTEMBER 2008**.
- ◆ Teaching and Learning Forum 2008 is to be held from Tuesday, **23rd September** to Wednesday, **24th September 2008** in Canberra, ACT.

