

MONTHLY NEWSLETTER

MAY 2007

In this newsletter.....

1. ANAPHI Secretariat Contact Details
2. New ANAPHI website (www.anaphi.org.au)
3. SHAPE 2007 Symposium (12th/13th July) - Conference Details
4. Public Support for Science and Innovation Research Report
5. Newsletter Speciality Focus - Building Research Capacity in Indigenous Australians and Community Controlled Health Services
6. Important dates

ANAPHI SECRETARIAT CONTACT DETAILS

Host organisation - School of Public Health, La Trobe University, Bundoora, Victoria

Chair - Vivian Lin

Phone - 03-9479-1717

E-mail - v.lin@latrobe.edu.au

Secretariat - Penelope Smith

(Days in the office - Wednesday to Friday)

Phone - 03-9479-5085

E-mail - Penelope.smith@latrobe.edu.au

Researcher - Chantelle Fernando

(Days in the office - Wednesday & Thursday)

Phone - 03-9479-1904

E-mail - chantelle.fernando@latrobe.edu.au

Fax - 03-9479-1783

School of Public Health Reception - 03-9479-1740

Website - <http://www.latrobe.edu.au/publichealth/>

NEW ANAPHI WEBSITE

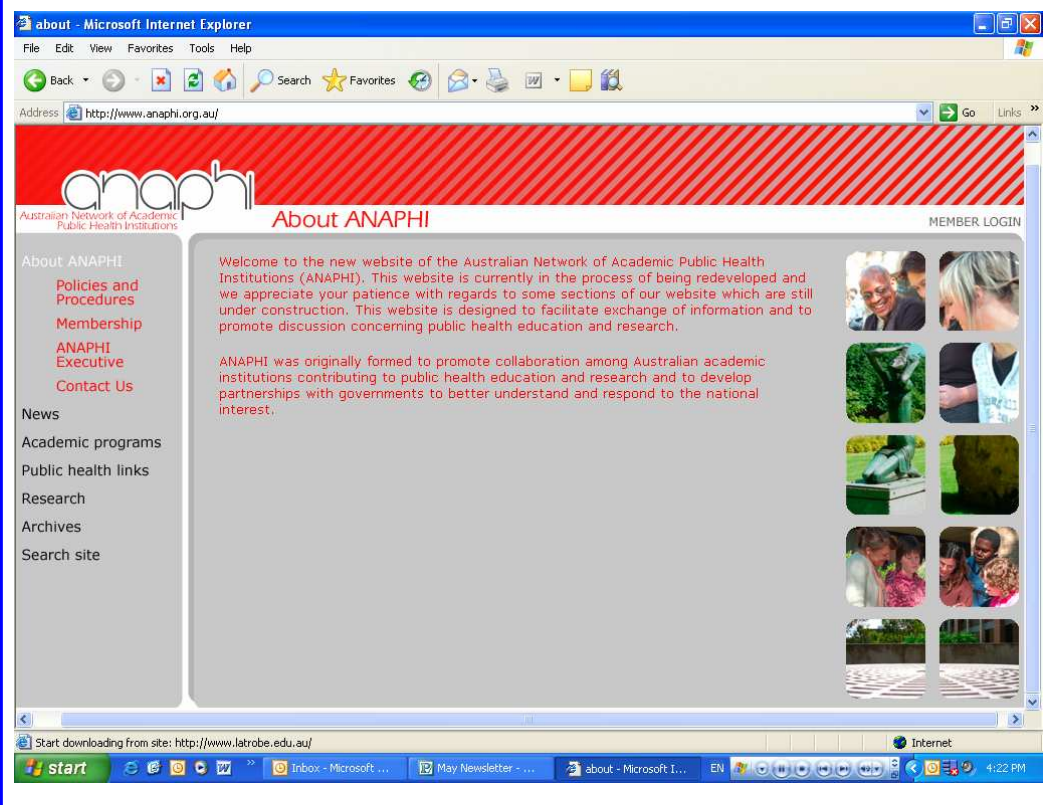
www.anaphi.org.au

At the January face to face meeting held in Sydney last year it was proposed by the outgoing Secretariat, Rebecca Watson, that a stand alone website for ANAPHI should be considered. At the November face to face meeting held in Melbourne later in the year it was confirmed by the representatives in attendance that in 2007 this would happen. The main reasons for developing an external website were as follows:

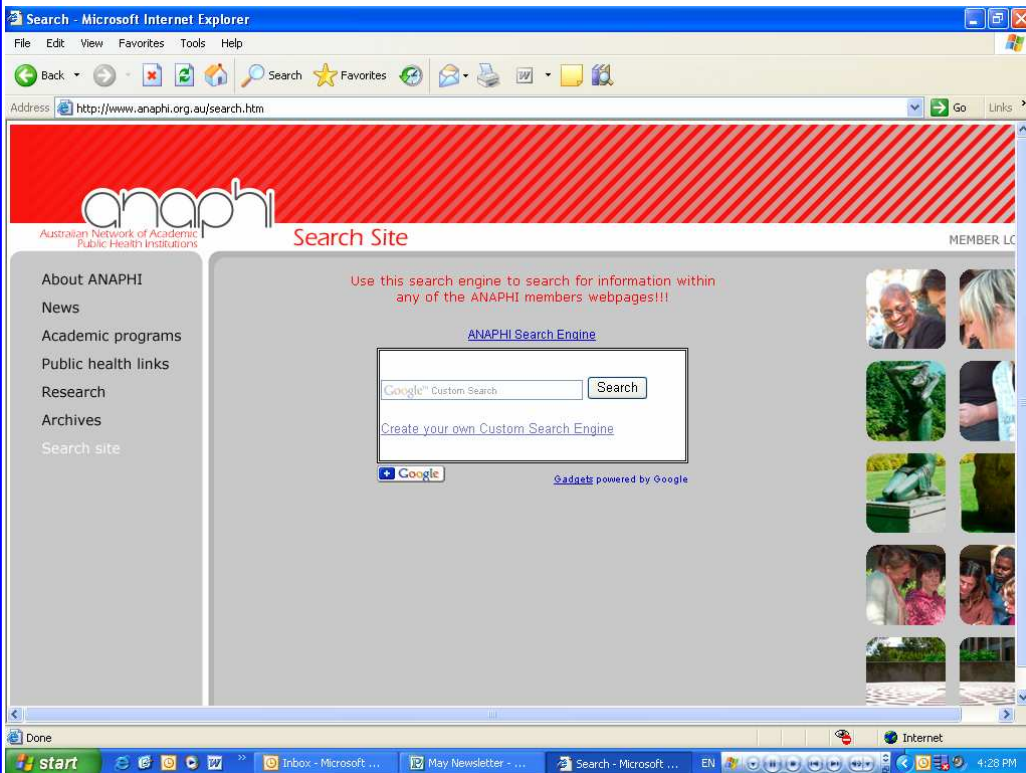
- (1) External website allows ease between chairing member organisations
- (2) External website allows ease regarding content of webpages
- (3) External website allows freedom regarding adding, changing and deleting information.

In March 2007 web designer Theo Robinson was employed to work with the secretariat, Penelope Smith, to develop the new website with assistance from the ANAPHI Executive. This new website can be found at the following address: www.anaphi.org.au. It is hoped that over the coming year that new additions and changes will make the website more accessible to ANAPHI representatives, interested industry and government, and the general public, particularly our students.

Below is a snapshot taken of the new homepage.



One item of which may be of particular interest to representatives is the new search engine created by our web designer Theo. This search engine allows visitors to perform searches that use only the 21 ANAPHI member organisations for information (see below snapshot).



Please be advised that currently the website is still under construction and the Secretariat and the web designer would appreciate any feedback that representatives may have.

Item submitted by ANAPHI Secretariat, Penelope Smith



2007 SHAPE SYMPOSIUM & AGM - FUTURE DIRECTIONS FOR HEALTH SERVICES MANAGERS

Dates - 12th - 13th July

Venue - Swiss Grand Hotel
(Corner Campbell Parade & Beach Rd, Bondi Beach)

The Program is currently being finalised by the National Symposium Organising Committee and will be available in due course on the SHAPE website (www.shape.org.au). The Program will include prominent national speakers, plenary and interactive workshop sessions and ample opportunity to network with colleagues.

Registration Fees

Full Registration (including dinner):	AUS\$370
Thursday only, including conference dinner	AUS\$270
Thursday or Friday only, excluding conference dinner	AUS\$210

Early Bird: \$330. (Full registration and conference dinner), closes 8th June, 2007

The registration fee includes GST and covers lunch, teas and/or the conference dinner. Additional costs apply for accommodation, details of which is to be found at on the Symposium page.

Link to registration form:

<http://www.shape.org.au/Symposium%202007/Registration%20form.doc>



PUBLIC SUPPORT FOR SCIENCE AND INNOVATION RESEARCH REPORT

The research report, Public Support for Science and Innovation, was released on 27th March 2007. The full report can be found at the following website:

<http://www.pc.gov.au/study/science/finalreport/science.pdf>

Also, please go to the following link for the full media release:

<http://www.pc.gov.au/study/science/finalreport/mediarelease.html>

Public Support for Science and Innovation Research Report

Contents

1. Introduction
 2. A snapshot of Australia's science and innovation system
 3. Rationales for public support
 4. Impacts
 5. Impediments to the functioning of the innovation system
 6. Workforce issues
 7. Commercialisation and utilisation
 8. Performance evaluation and benchmarking
 9. Funding levels, funding mix and coordination issues
 10. Business programs
 11. Public Sector Research Agencies
 12. Funding higher education research
- A Participation
- B Major Australian Government Support
- C International comparison and R&D targets
- D Absorption costs
- E Multifactor productivity
- F Static models of multifactor productivity
- G Semi-parametric estimates of the impact of R&D
- H State level panel data estimation of the returns to public and private R&D
- I What can be learnt from cost-benefit case studies+
- J Patent and innovation indicators
- K Publications and scientific performance
- L Science and innovation workforce
- M Does public support elicit additional R&D?
- N Intellectual property system
- O Research infrastructure expenditure
- P Privacy Act 1988
- Q Privacy legislation
- R Business innovation determinants
- S R&D expenditure by State and Territory
- T R&D support and 'transformational firms'

References

Building Research Capacity in Indigenous Australians and Community Controlled Health Services

Introduction - At the face-to-face ANAPHI meeting in November 2006 it was suggested by representatives present that in 2007 the ANAPHI newsletter should have a section devoted to the speciality areas of the different representatives and membership institutions of the ANAPHI. This is the fourth of these such sections devoted to an area of speciality. As 27th May was the 40th anniversary of 1967 referendum which saw over 90 per cent of Australians vote to remove clauses from the constitutions which discriminated against Indigenous people, and 26th May was National Sorry Day, we felt that a piece focused on Indigenous Australians would be timely and appropriate. This piece has been contributed by Richard Speare, of James Cook University and is entitled "Building Research Capacity in Indigenous Australians and Community Controlled Health Services".

We hope that you enjoy this change to the newsletter format throughout the year. If you have any comments please let me know. Penelope Smith, Secretariat



Building Research Capacity in Indigenous Australians and Community Controlled Health Services James Cook University

In addition to building the research capacity of a cohort of Indigenous researchers based in Northern Australia and Victoria this project will establish a network to promote Indigenous health research and build capacity in three Aboriginal Community Controlled Health Services (ACCHS) already involved in Indigenous and population health research and in employees within those three ACCHS. The project will investigate and evaluate models of how Universities can best build research capacity in Indigenous population health researchers.

The Faculty of Medicine, Health and Molecular Sciences (FMHMS) at James Cook University (JCU) has an established record of working with Indigenous communities to develop and deliver both research and teaching programs in response to community identified priorities. The Faculty has 22 Indigenous staff involved in teaching and research at various levels. Within the population health field, the School of Public Health, Tropical Medicine and Rehabilitation Sciences (SPHTMRS), one of the 5 schools within FMHMS, has graduated approximately 21 Indigenous students through its MPH and MPH&TM program (with 9 additional Indigenous students currently undertaking coursework Masters). The next phase is to facilitate the movement of Indigenous health professionals from masters to doctorate level and so develop high level research skills.

Taking Indigenous participation beyond mere gate-keeping or junior partnership, this project will enhance the strategic role of ACCHS as key sites for communities to define research problems, identify solutions and translate, implement and evaluate population health research.

The project aims to:

- ◆ Build the research capacity of a team of 12 Indigenous researchers, 1 non-Indigenous researcher and ACCHS personnel in population health research in northern and rural Australia.
- ◆ Develop a collaborative network to promote Indigenous population health research between 3 ACCHS already involved in research, JCU and other organisations.
- ◆ Investigate and evaluate models of how Universities can best assist Indigenous individuals, communities and organisations to build high quality, decision-linked and locally-relevant Indigenous population health research capacity.

Lead investigators include:

- ◆ Jacinta Elston (Indigenous Support Unit)
- ◆ Rick Speare (SPHTMRS)
- ◆ Komla Tsey (SPHTMRS and Centre for Indigenous Australian Studies)
- ◆ Richard Murray and Craig Veitch (School of Medicine)

The three ACCHS are:

- ◆ Townsville Aboriginal and Islander Health Service (Townsville)
- ◆ Kimberley Aboriginal Services Council (Broome)
- ◆ Rumbalara Aboriginal Co-operative Ltd (Shepparton)

Rick Speare, Director

Anton Breinl Centre for Public Health and Tropical Medicine

School of Public Health, Tropical Medicine and Rehabilitation Sciences

James Cook University, Townsville, QLD

E-mail: richard.speare@jcu.edu.au

IMPORTANT DATES!

- The next ANAPHI newsletter will be sent on Wednesday, 27th June. All contributions for this newsletter will need to be sent to the ANAPHI Secretariat, Penelope Smith, by COB Friday, 22nd June.
- The next ANAPHI Executive teleconference is Wednesday, 11th July at 3pm (EST).